



User Manual



-
-



	± ±

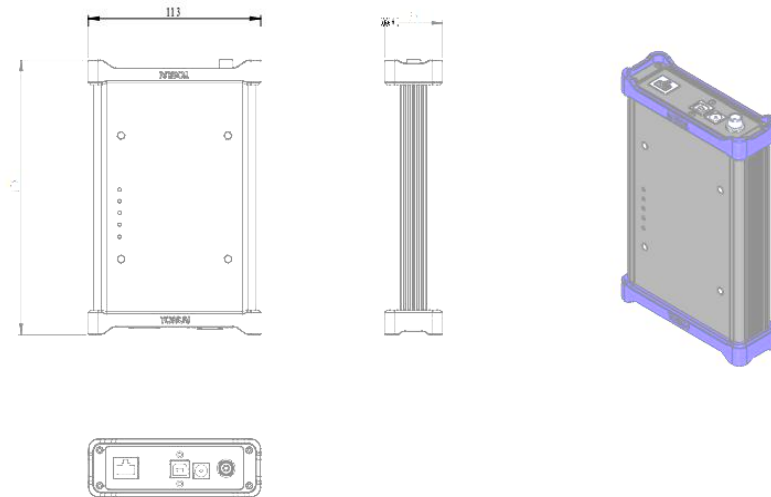


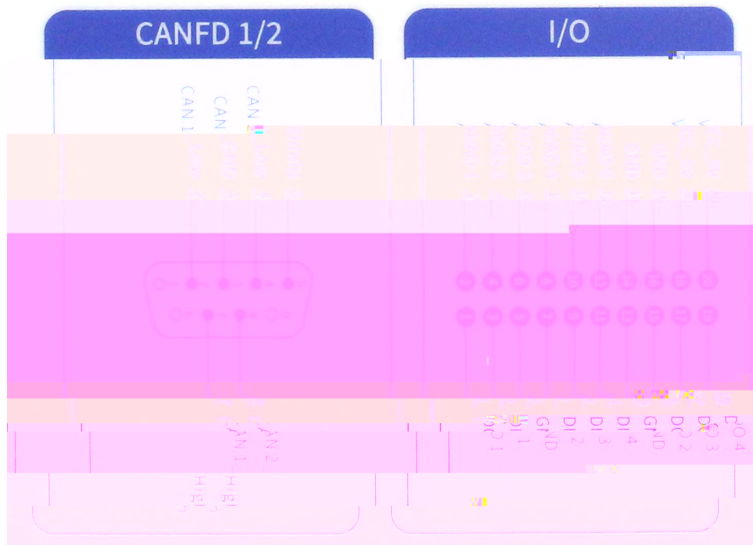
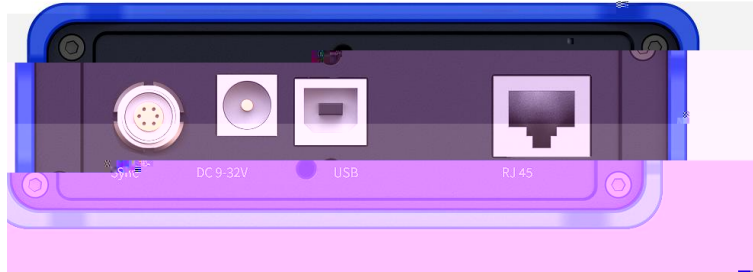






			±	
			±	
			±	





TOSUN


TX1000

- Power
- MCD
- Link
- CANFD 1
- CANFD 2







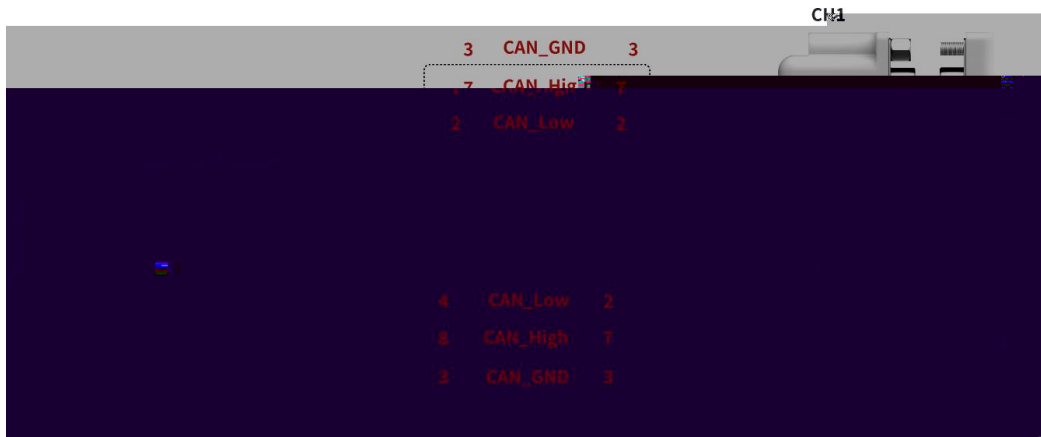
 _____

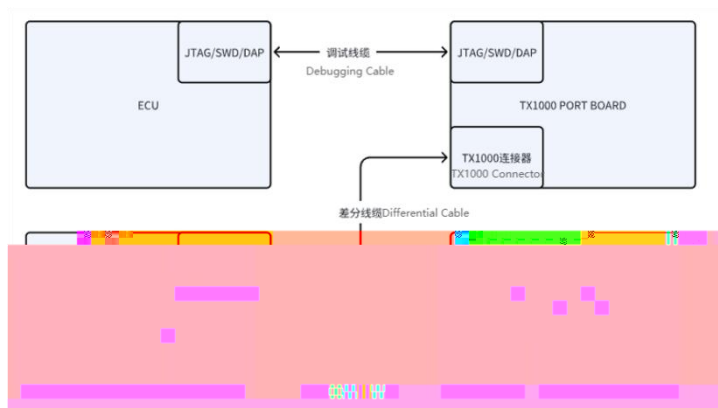
--	--	--	--

		 A blue diagnostic tool with a screen displaying 'TOSUW' and 'T.M1000v'. The screen also shows a menu with options: 'HOME', 'MENU', 'MODE', 'CAMERA', and 'CAMERA2'. Below the screen are several buttons and a small display.	
		 A black cable with a standard USB-A connector on one end and a custom multi-pin connector on the other.	
		 Two white cables with multi-pin connectors. One is a standard 25-pin D-sub connector, and the other is a custom multi-pin connector.	
		 A blue cable with two custom multi-pin connectors at both ends.	
		 A black cable with two custom multi-pin connectors at both ends.	
		 A black rectangular adapter with a label that reads 'TOSUW XCP Adapter'. It has a small connector on the bottom edge.	



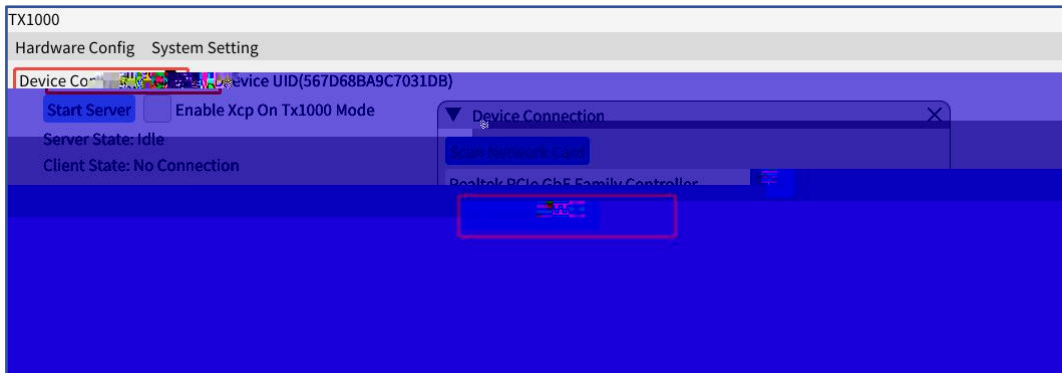
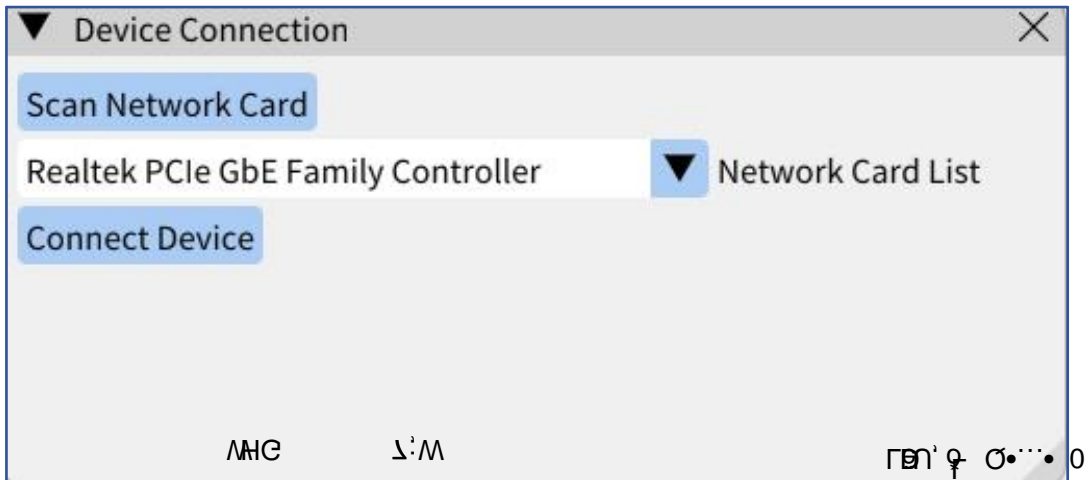




de _a _ 1000 _ e _ c _ h _ _ de

de _a _ c _ e _ c _ _ g_add _ _ c

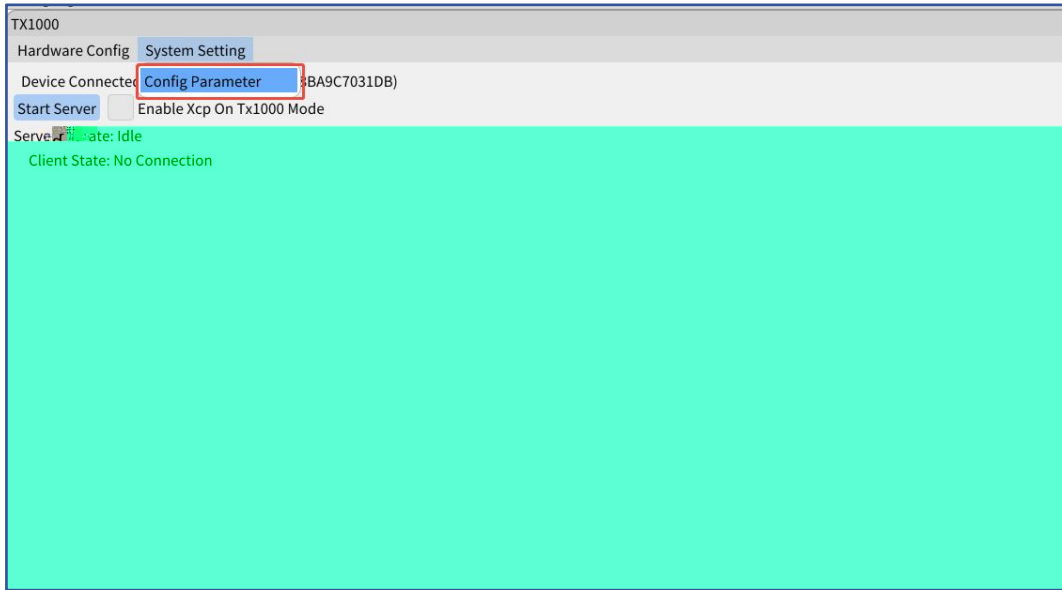
```
std::cout << "客户端已连接:" << inet_ntoa(c) << endl;
// 接收客户端发来的数据
while (1)
{
    char buf[1024];
    if (recv(c, buf, sizeof(buf), 0) > 0)
    {
        cout << "收到客户端发来的数据:" << buf << endl;
    }
    else
    {
        if (errno == ECONNRESET)
        {
            cout << "客户端已断开连接" << endl;
        }
        else
        {
            cout << "未知错误" << endl;
        }
    }
}
```

HL 7

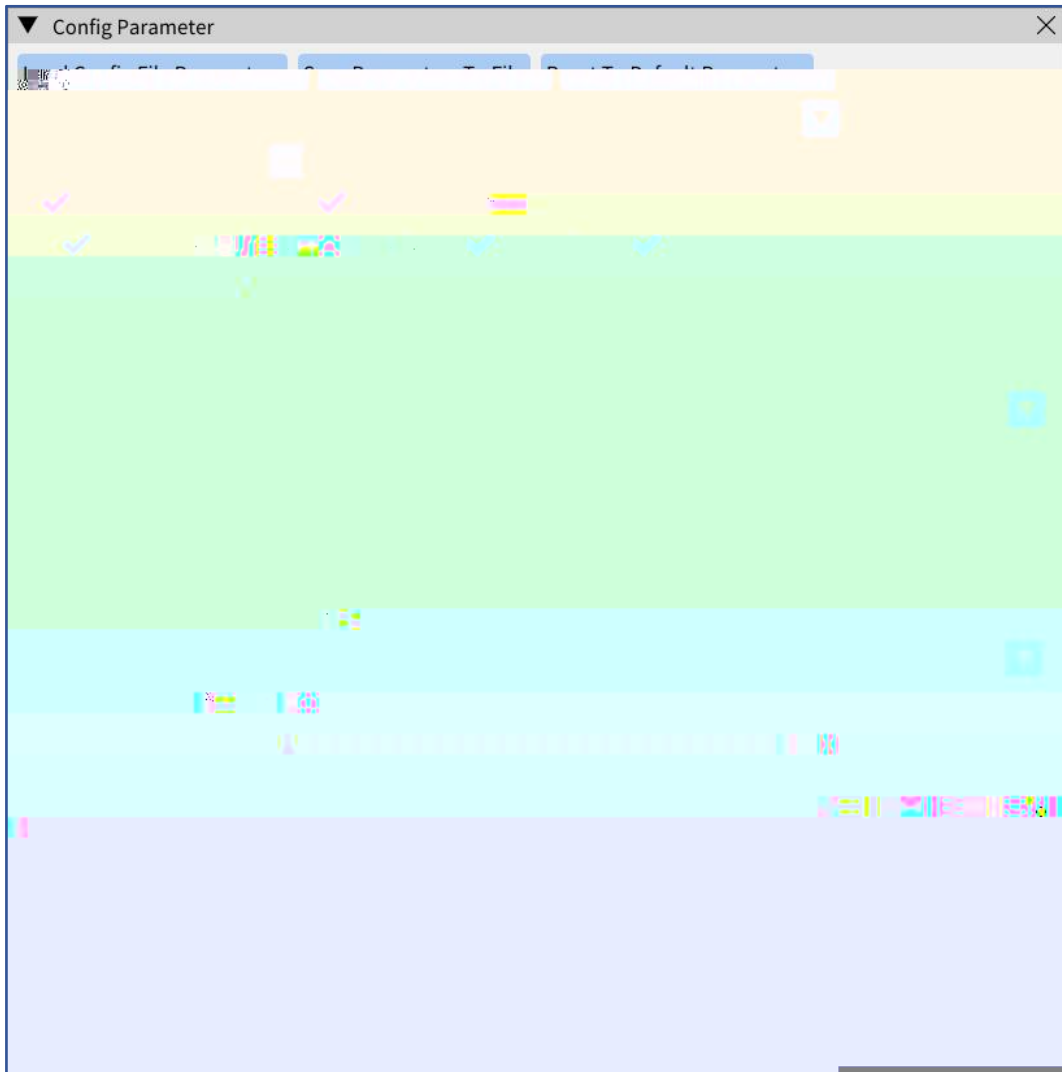
VU





-
-
-

c _c f+g.t +



TX1000

Hardware Config System Setting

Device Connected Device UID(567D68BA9C7031DB)

Enable Xcp On Tx1000 Mode

Xcp Ring Version: 0x0

Server State: Connection Accepted

Client State: Connected

TSMaster x64 v2025.12.10.1759 [tx1000]

Analysis Hardware Design Simulation Code Generation Test **Application** Subject Tools Help

App Manager Toolbox Builder TSMaster Toolbox Diagnostic Module DoIP DTC Analysis Calibration Manager Parameter Curve CDM Widgets Data Processor Map Viewer Instruments Manager Serial Port Picoscope

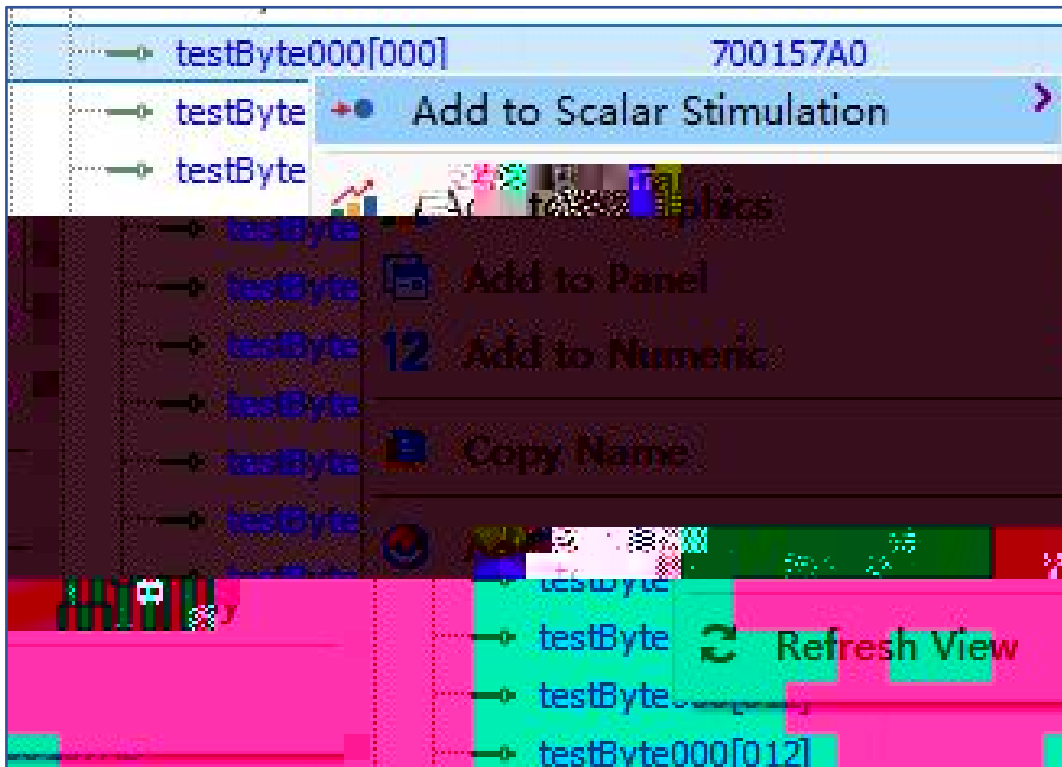
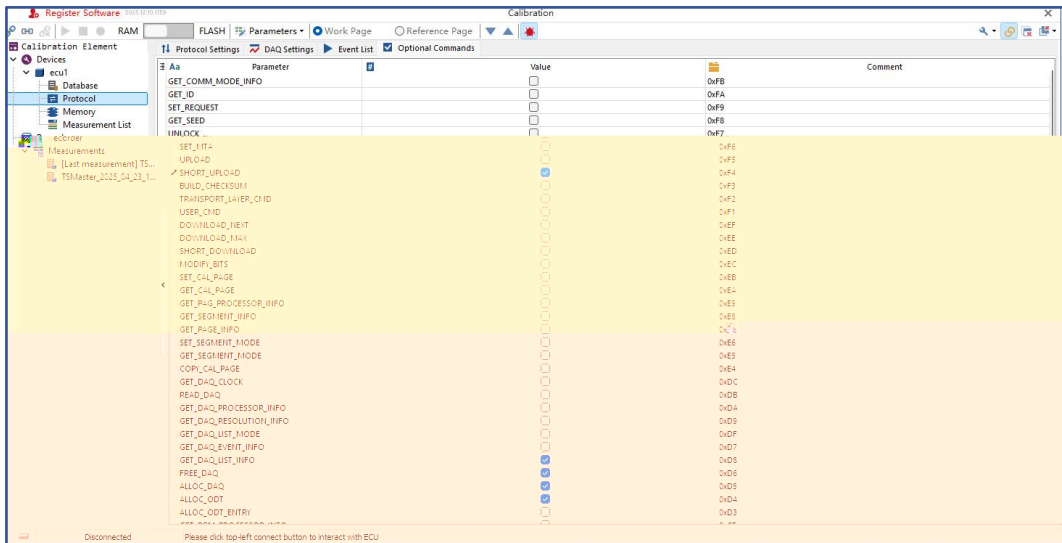
App Management Diagnostics Calibration Common Tools

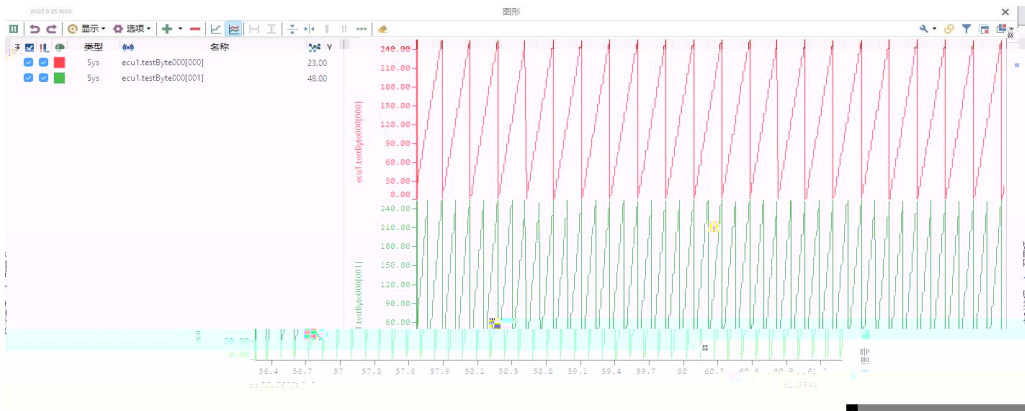
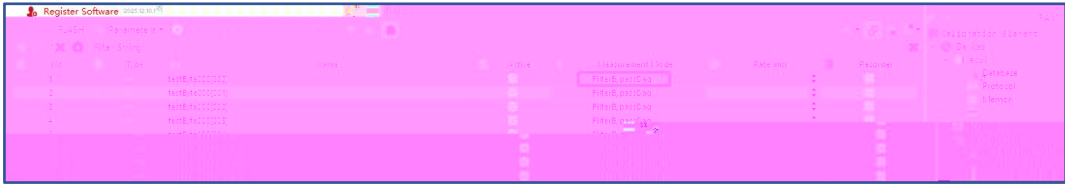
2025.12.10.1759 System Messages

ETH: ON TCP/IP STACK

Register Software v2025.12.10.1759 Calibration

Calibration Element	Parameter	Value	Comment
Driver		XCP	Calibration Driver Type
Database	test_new.a2l		Specify A2L file
Transport Layer		ETH:OS TCP/IP Stack	Select transport layer
Logic Channel		2	Assign a logic channel of selected transport layer
Recorder	Enabled		Enable or disable this ECU





D

•H "l @ •8MΛ@D



- c_... .c
- c_... g
-
- da a_ d _e

```

uint8_t tx_ring_buff[4096];
uint8_t rx_ring_buff[4096];
struct_tosub_xcn_ping_t_xcn_ping_t {
    .info {
        .xcn_version = 0x20252025
    }
};

```

- `_c_e`
- `_c_a = .h`
- `_c_e e _ha d e`

```

},
void* tosun_xcp_setup(struct tosun_xcp_init_pars_t* init_pars_p);
void tosun_xcp_handle();
void tosun_xcp_event_handle(void* xcp_p, uint16_t event_idx);
#ifdef _cplusplus

```

•

_ c _ h a d e ()

e e _ h a d e f c +

```

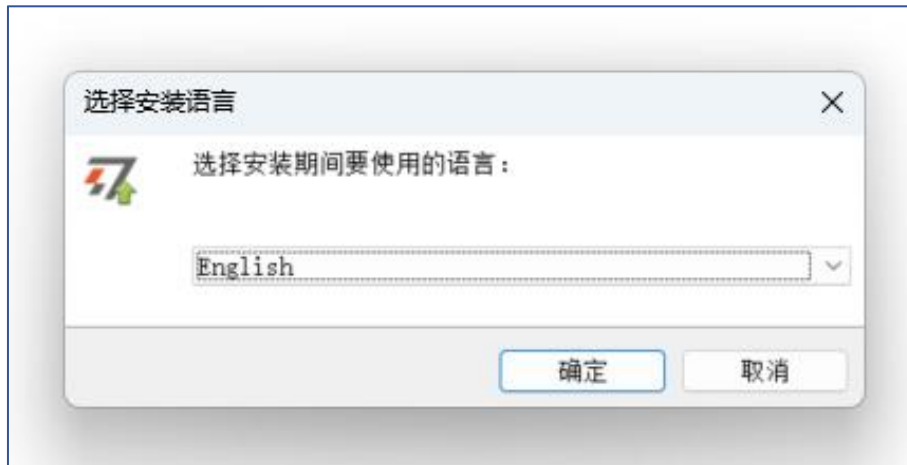
void*xcp_p = NULL;
struct tosun_xcp_init_pars_t init;
void task_10ms(){
    uint16_t event_idx=0;
    uint16_t daq_val=0;
    xcp_p = tosun_xcp_setup(&init);
    {
        while(1){
            delay_ms(10);
            tosun_xcp_handle();
            daq_val++;
            tosun_xcp_event_handle(xcp_p,event_idx);
        }
    }
}

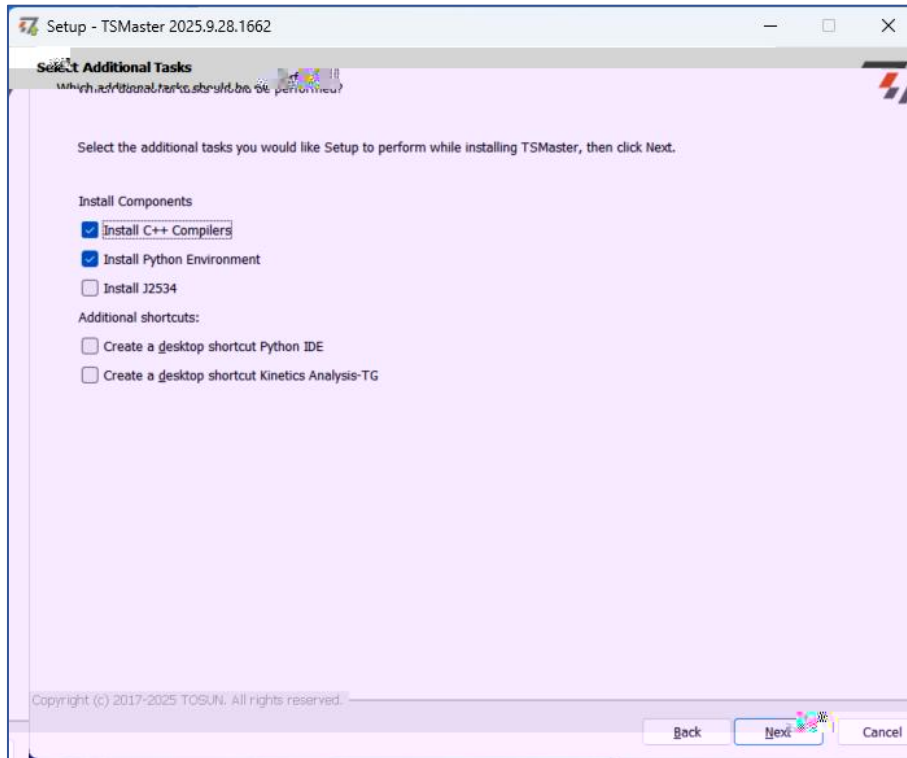
```

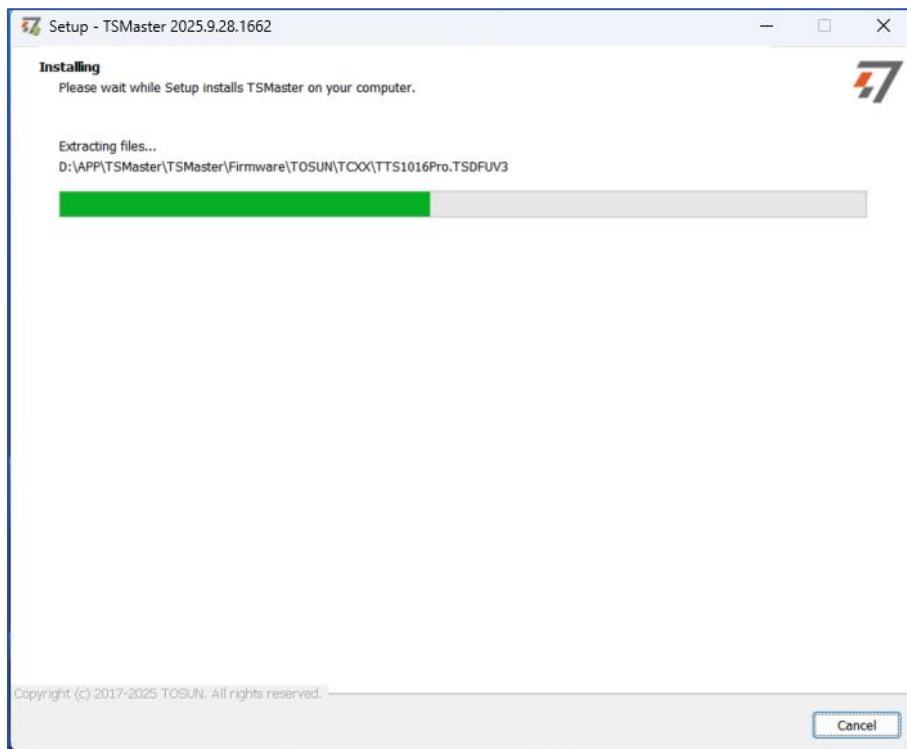
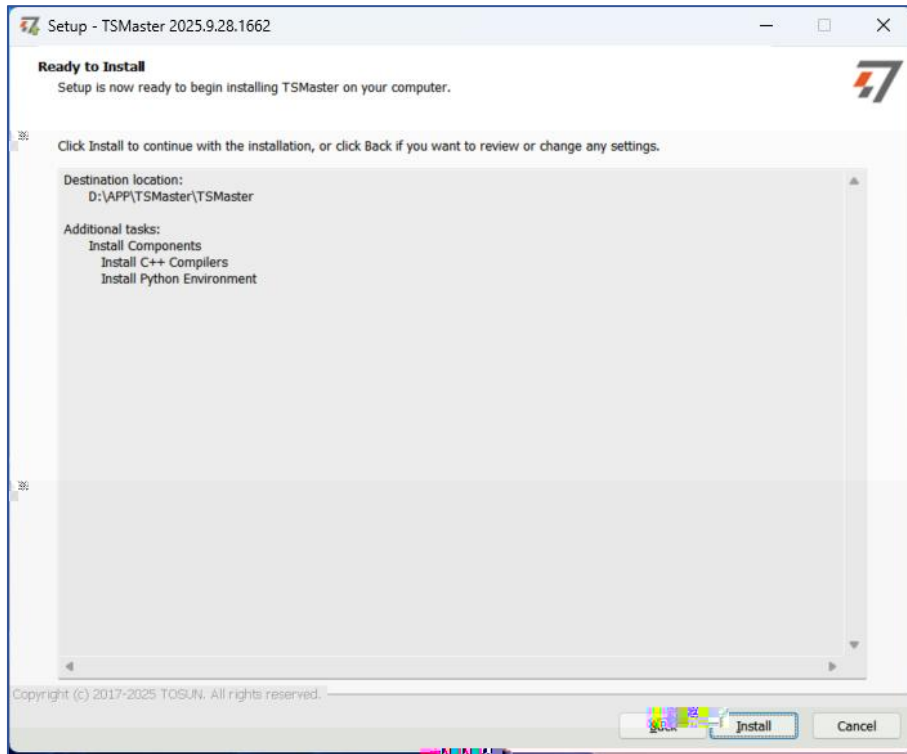


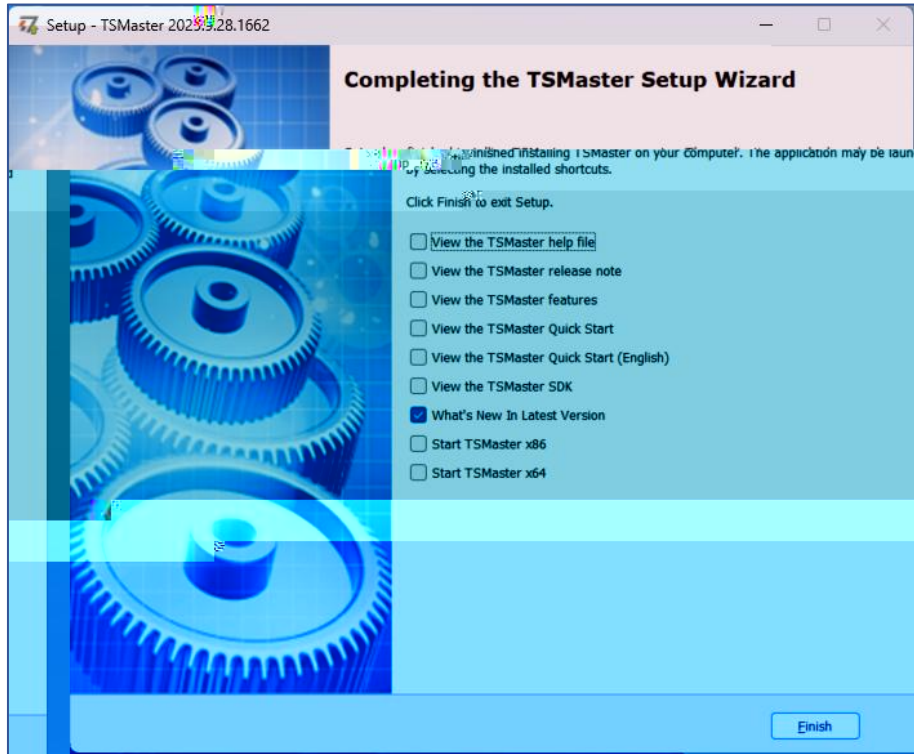
	±



















Software

• 3D-Modellierung
 • Simulation
 • Programmierung
 • Dokumentation

• 3D-Modellierung
 • Simulation
 • Programmierung
 • Dokumentation

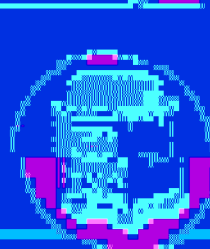
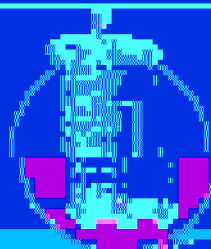
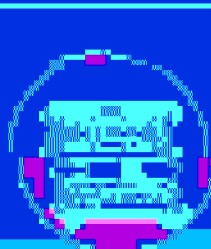


3D-Modellierung

Simulation

- Finite-Elemente-Methode (FEM)
- Mehrkörperdynamik (MKS)
- Strömungsmechanik (CFD)
- Thermische Simulation
- Schwingungsanalyse
- Zuverlässigkeitsanalyse

- 3D-Modellierung
- Simulation
- Programmierung
- Dokumentation



Hardware

• 3D-Modellierung
 • Simulation
 • Programmierung
 • Dokumentation

• 3D-Modellierung
 • Simulation
 • Programmierung
 • Dokumentation



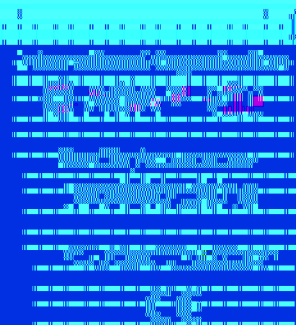
3D-Modellierung

- 3D-Modellierung
- Simulation
- Programmierung
- Dokumentation



3D-Modellierung

• 3D-Modellierung
 • Simulation
 • Programmierung
 • Dokumentation



• 3D-Modellierung
 • Simulation
 • Programmierung
 • Dokumentation

