

TOSUN



PBX

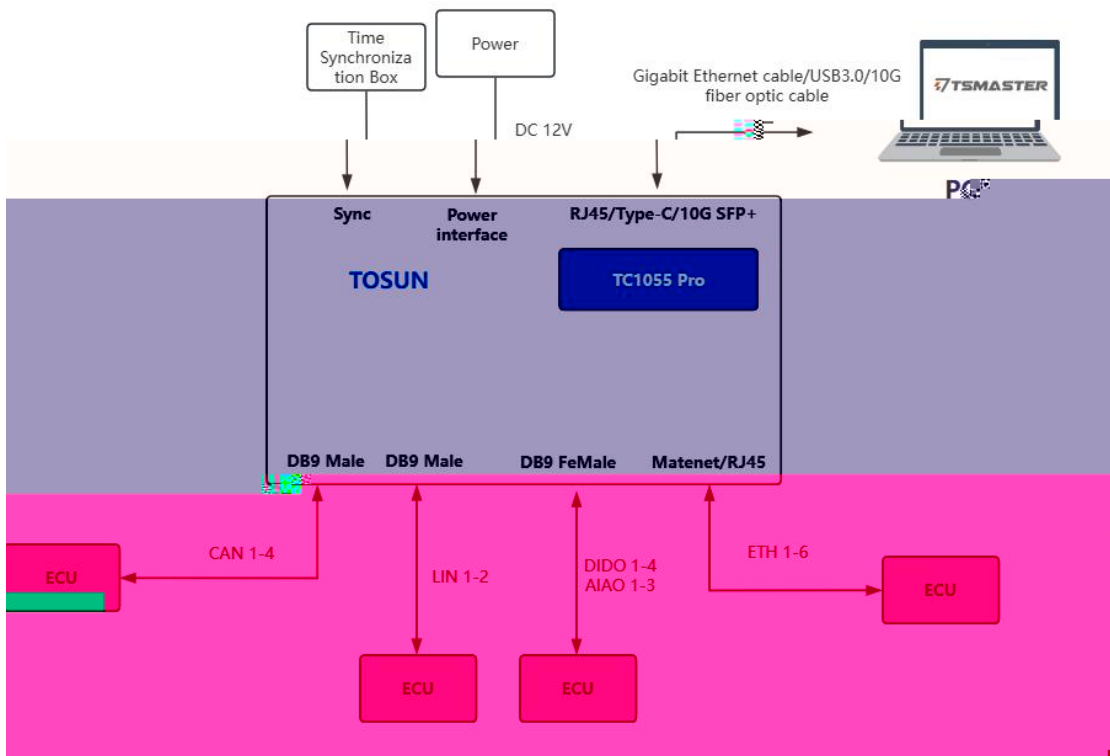
•

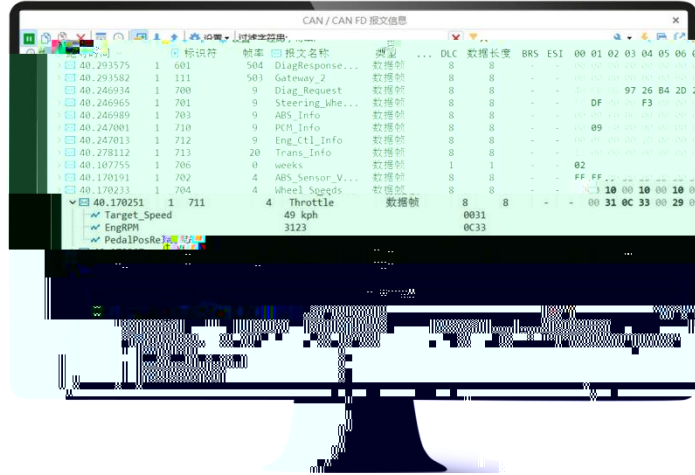
•

•

•

-
-
-
-
-
-
-



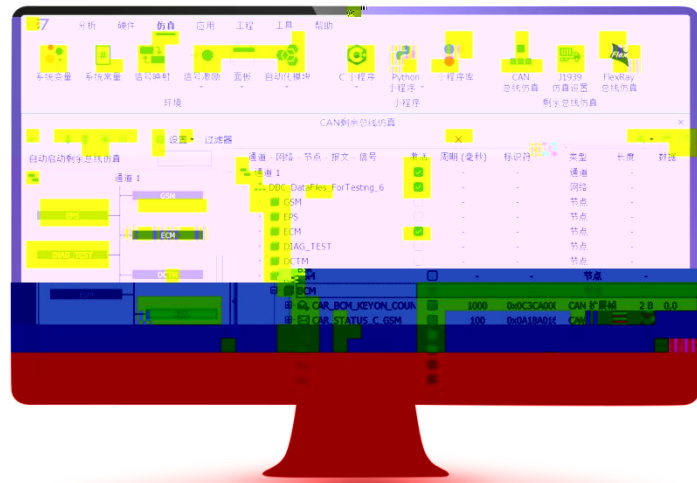


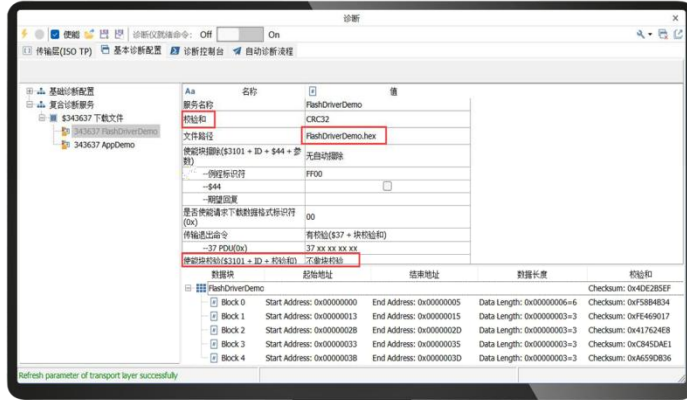
•

•

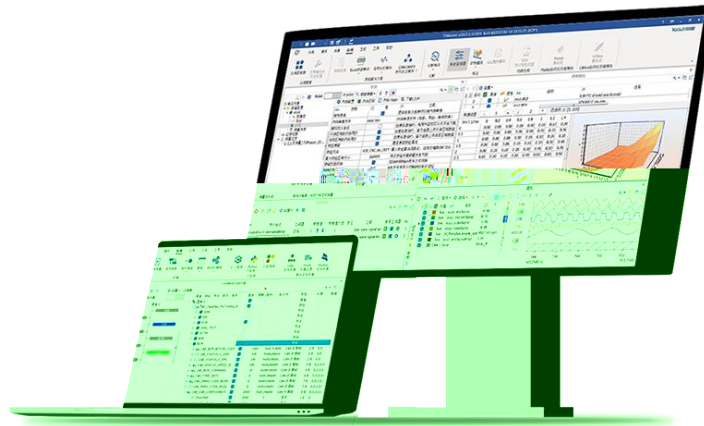
•

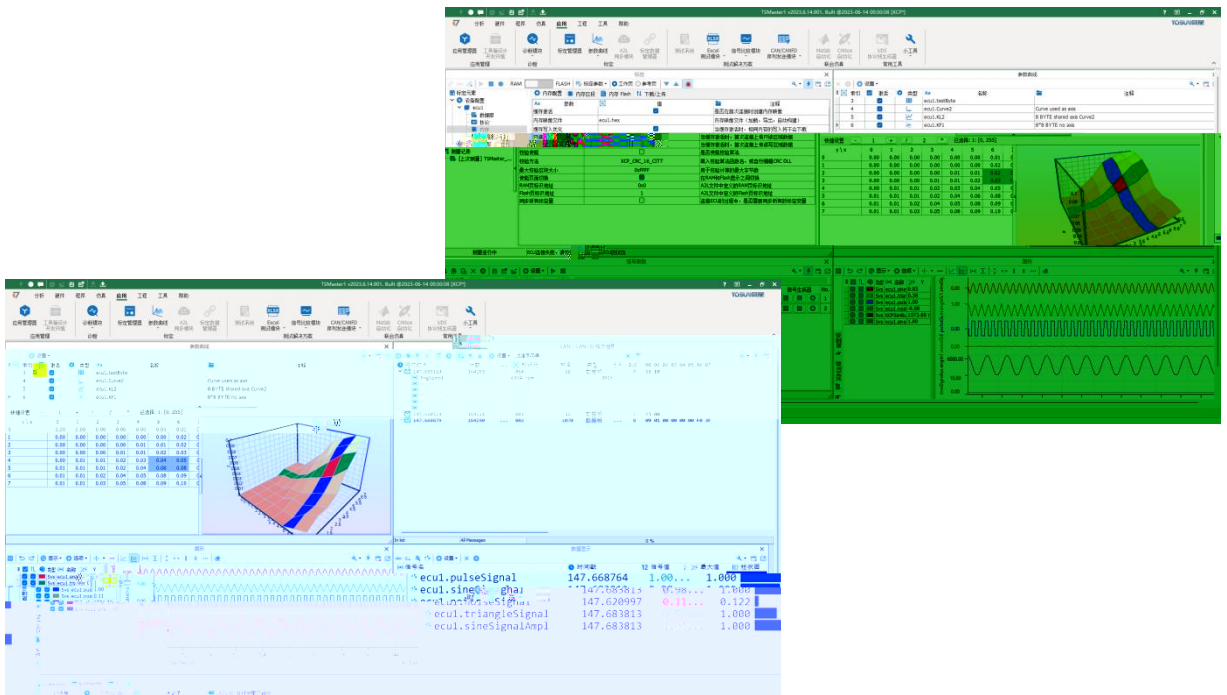
•

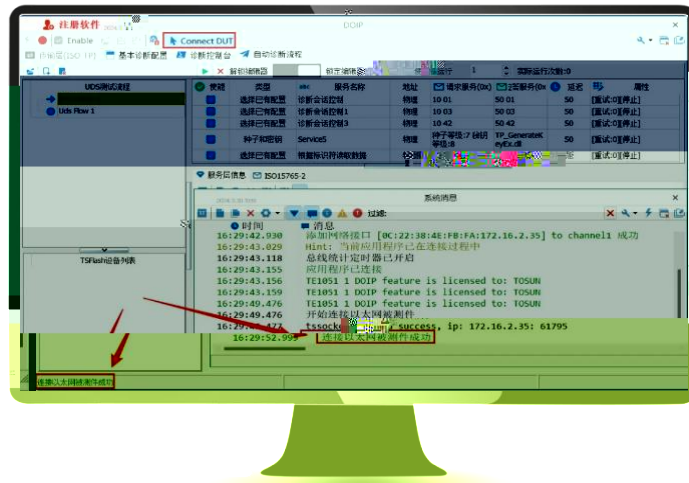




-
-
-

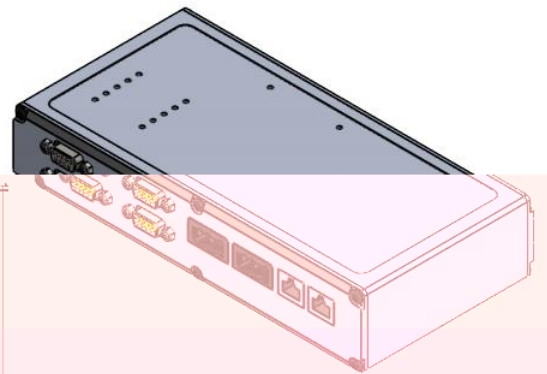
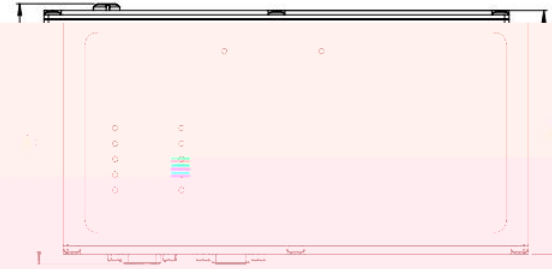
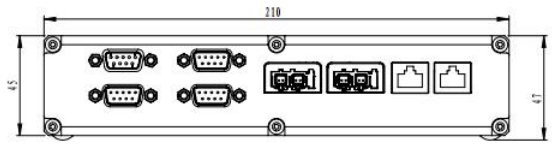




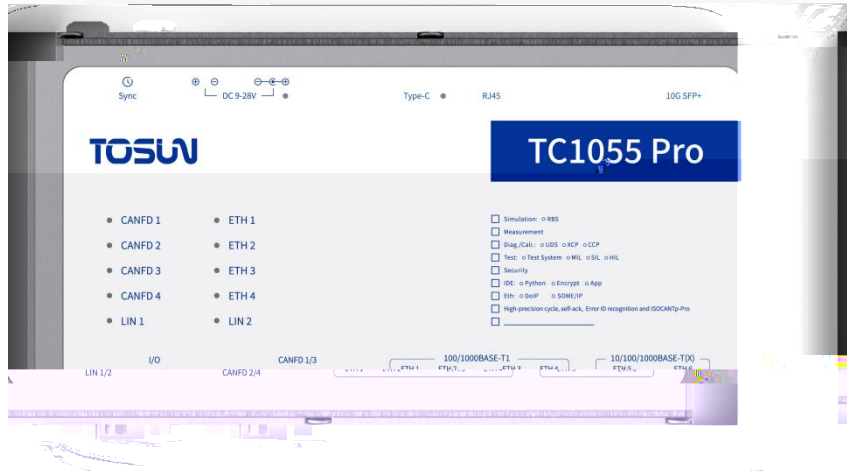


-
-
-
-
-





✓



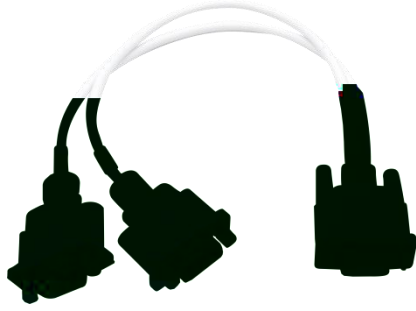
✓



✓

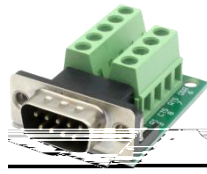


✓

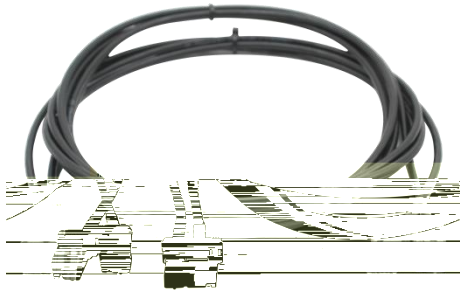


✓

—



✓



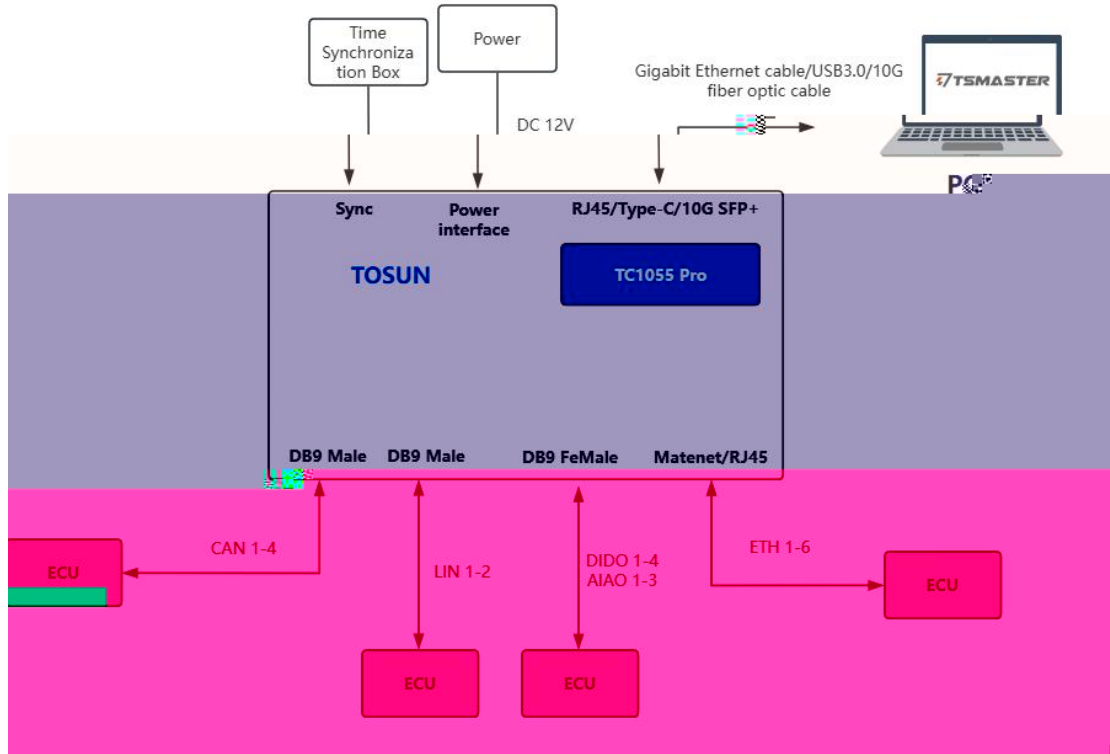
✓

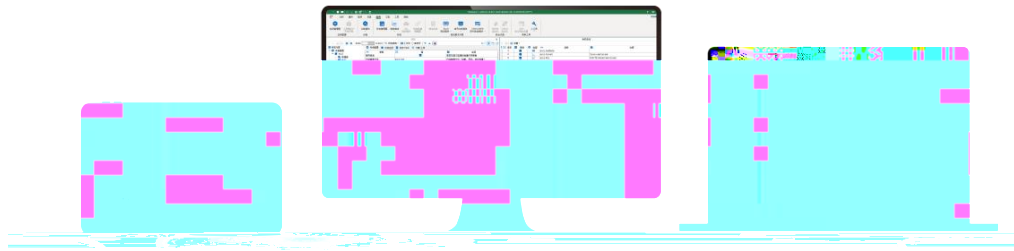




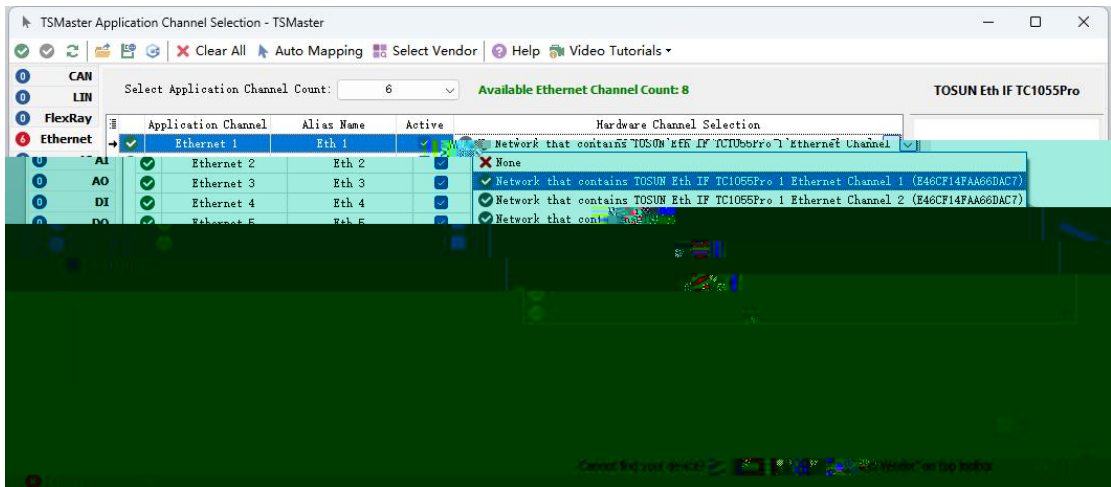
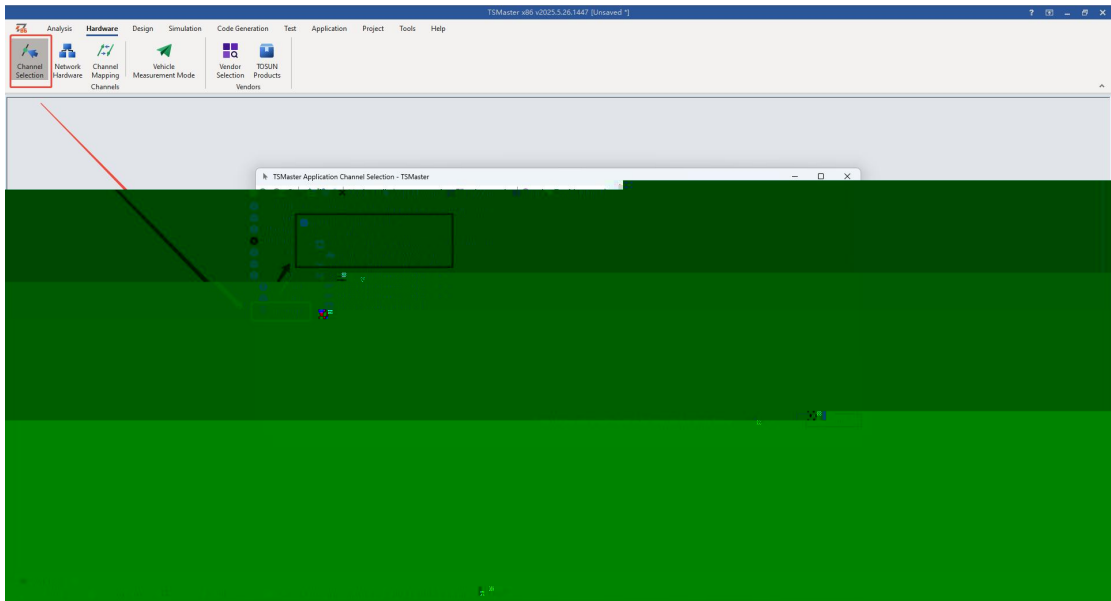


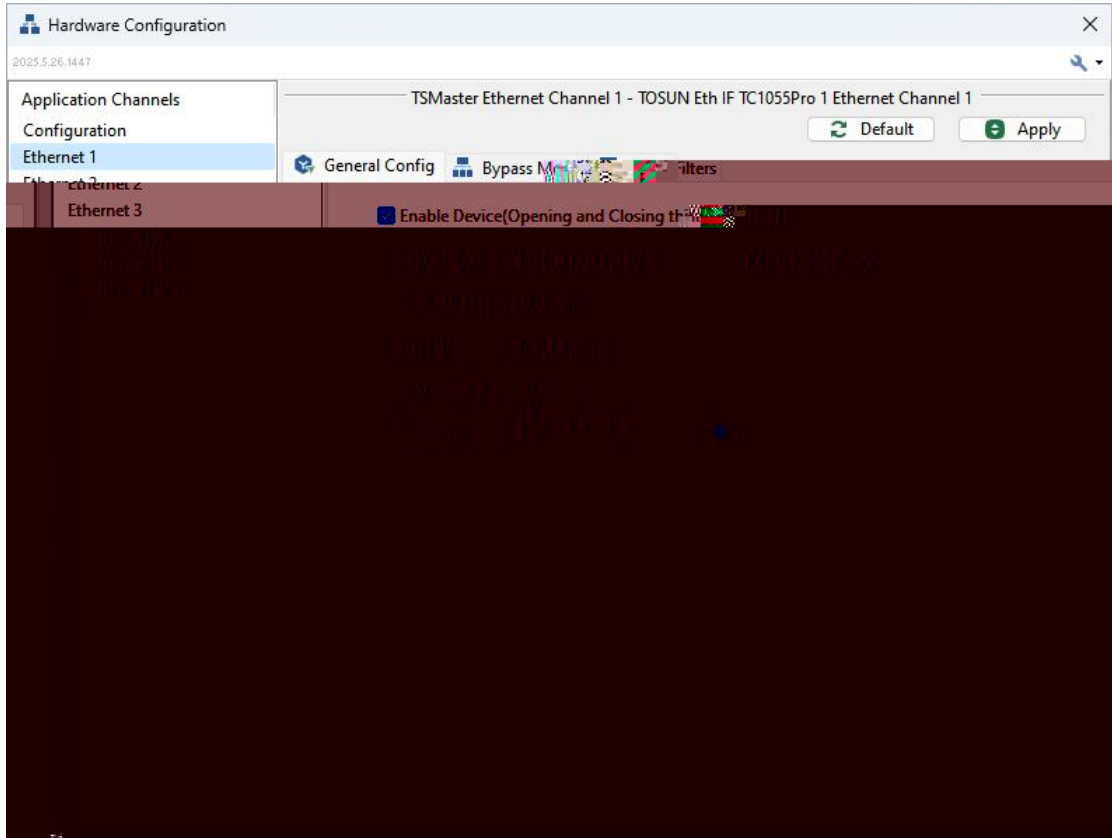












Hardware Configuration

2025.5.26.1447

Application Channels

- Configuration
- Ethernet 1
- Ethernet 2
- Ethernet 3
- Ethernet 4
- Ethernet 5

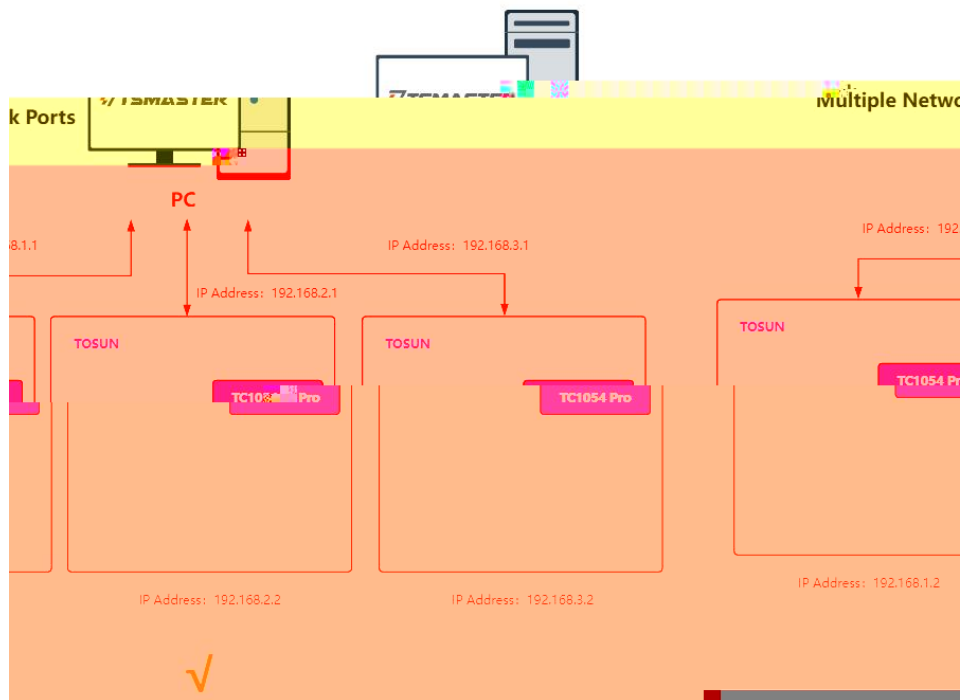
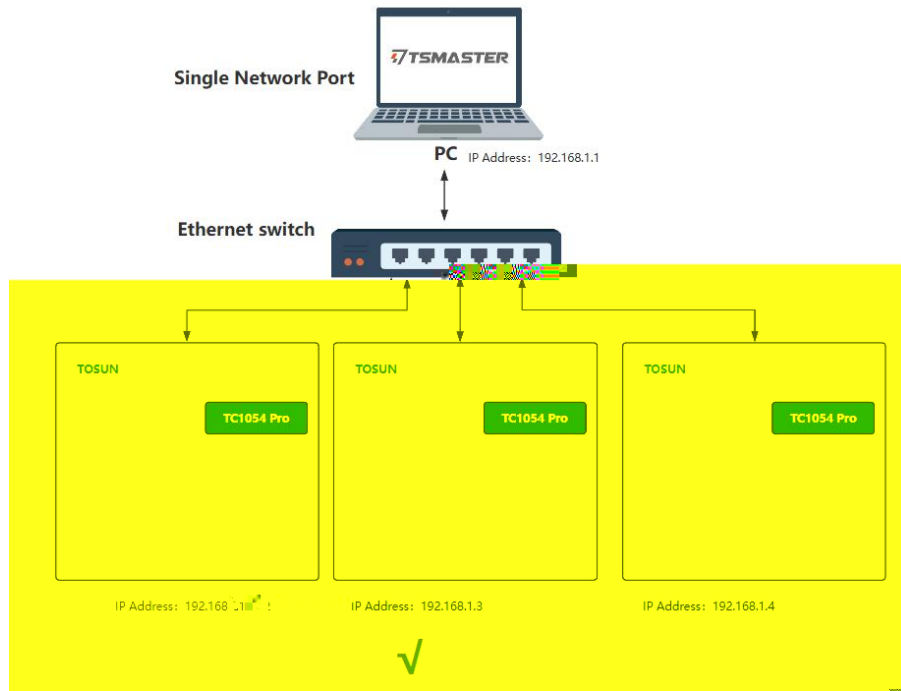
TSMaster Ethernet Channel 1 - TOSUN Eth IF TC1055Pro 1 Ethernet Channel 1

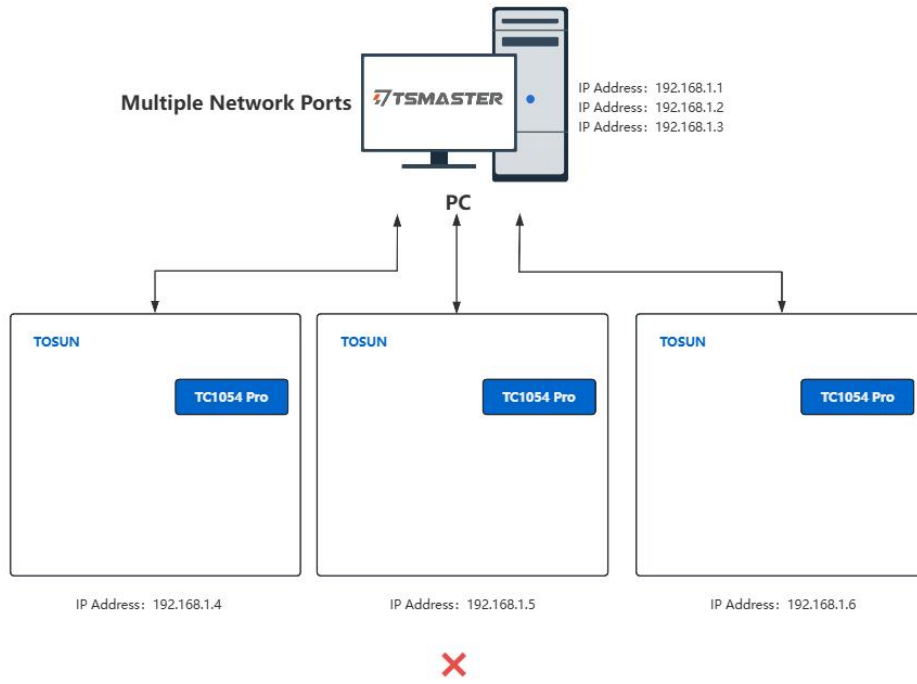
Default Apply

General Config Bypass Mode Filters

No Bypass

The diagram shows a network topology with four nodes arranged in a 2x2 grid. The nodes are represented by blue-outlined rectangles. They are interconnected by blue lines: a horizontal line connects the two top nodes, a horizontal line connects the two bottom nodes, and vertical lines connect each top node to its corresponding bottom node. Above the top row of nodes, there are two red lightning bolt symbols, one centered above each node. The entire diagram is overlaid on a dark red background.





Remote Access User Guide V1.0

Software

Support CAN/ED/LIN/RS485/COM/RS485

complete programming solution for CAN/ED/RS485/LIN/RS485/COM/RS485
 of all Python-interfaces

for existing CAN/ED/RS485/LIN/RS485



Python-Interface

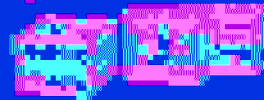
Hardware

Support CAN/ED/RS485/LIN/RS485/COM/RS485

1000

1000

Automatic release multi-connection device (1-2-3)
 Multi-channel CAN FD/RS485/RS485/RS485



TI interfaces

RS485/RS485/RS485/RS485/RS485/RS485

RS485/RS485/RS485/RS485/RS485/RS485

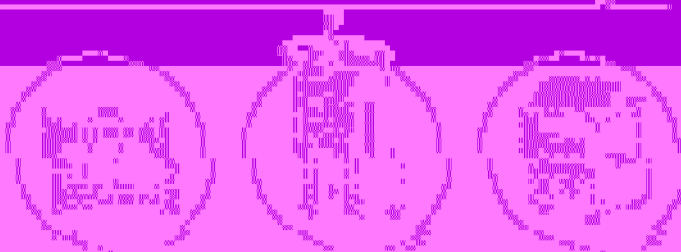
RS485/RS485/RS485/RS485/RS485/RS485

RS485/RS485/RS485/RS485/RS485/RS485



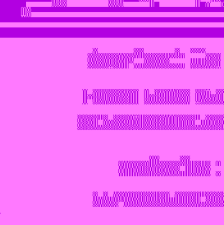
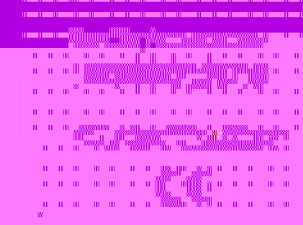
Solutions

- CAN/ED/RS485/RS485/RS485/RS485
- CAN/ED/RS485/RS485/RS485/RS485
- CAN/ED/RS485/RS485/RS485/RS485
- CAN/ED/RS485/RS485/RS485/RS485
- CAN/ED/RS485/RS485/RS485/RS485
- CAN/ED/RS485/RS485/RS485/RS485
- CAN/ED/RS485/RS485/RS485/RS485
- CAN/ED/RS485/RS485/RS485/RS485



About TOSLO

... ..



... ..

