

TC1055 Pro 产品手册

版本：V1.0 | 中文

1288 9

4849 14-17

" "

@ 2024-2025

CAN LIN

TC1055 Pro

- TC1055 Pro CAN/CANFD LIN
TC1055 Pro ECU

- / /USB3.0 TC1055 Pro
PC PC

-

- TC1055 Pro TSMaster TSMaster
UDS ECU CCP/XCP DoIP
SOME/IP

目录

1.关于手册	5
1.1 免责声明	5
1.2 版权信息	5
2.通用信息	6
2.1 总线数据采集分析	6
2.2 总线仿真	7
2.3 诊断	8
2.4 标定	9
2.5 DoIP 功能	11
3.TC1055 Pro	13
3.1 产品概述	13
3.2 功能特征	14
3.3 技术参数	15
3.4 电气参数	16
3.5 机械尺寸	17
3.6 发货清单	18
3.7 硬件接口说明	20
3.8 LED 指示灯说明	22
3.9 可选配件	24
4.快速使用	25
4.1 系统连接	25
4.2 驱动安装	25
4.3 软件简介	26
4.4 软件安装	26
4.5 硬件配合 TSMaster	27
4.6 注意事项	30
5.检查和维护	32
6.附录	33

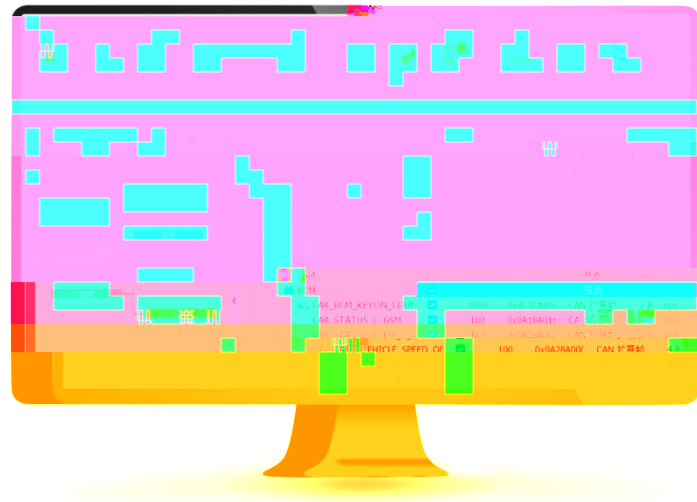
-

DBC

ID

-

Y



TSMaster

CAN LIN

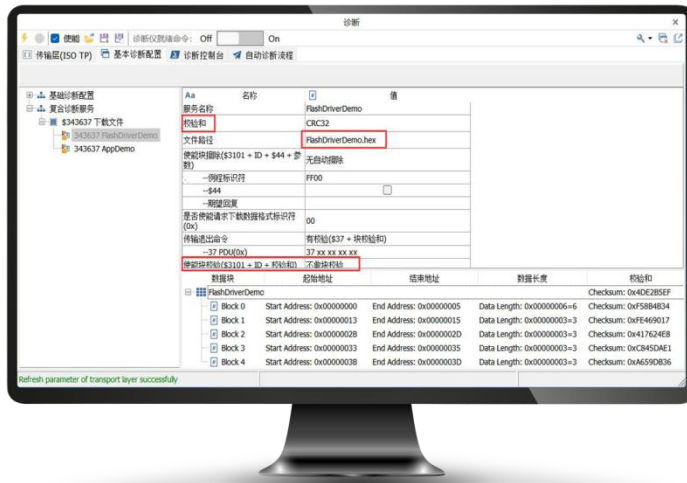
HIL

ECU

TSMaster

Panel

- CAN
- LIN
- J1939
-



ECU

UDS

-
-
-
-

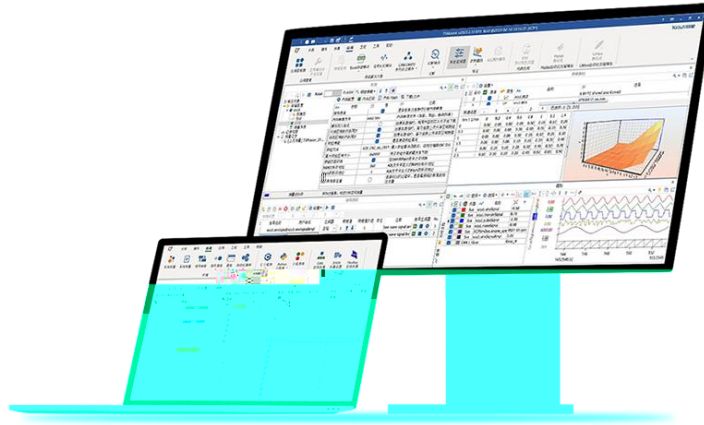
Tester Present

SeedKey DLL

SeedKey

SeedKey

Flash Bootloader



CCP

CAN Controller Area Network

ECU

ECU

XCP

CAN Ethernet

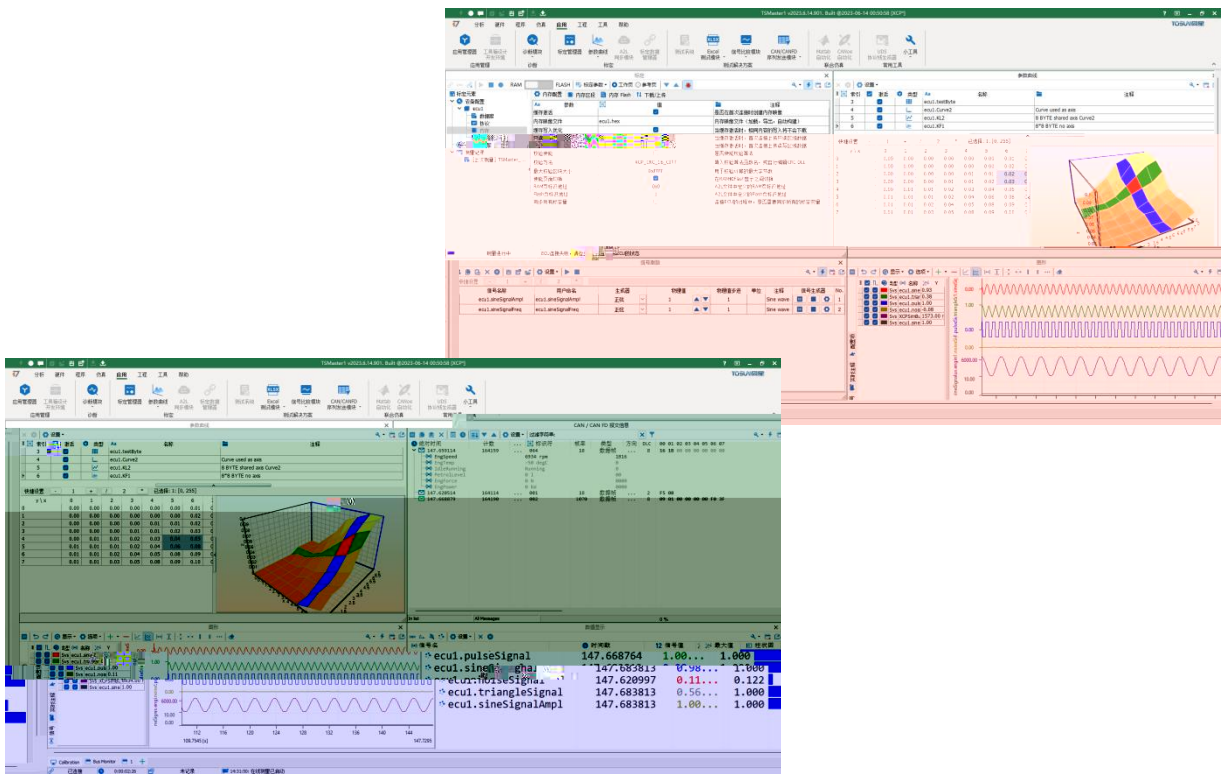
ECU

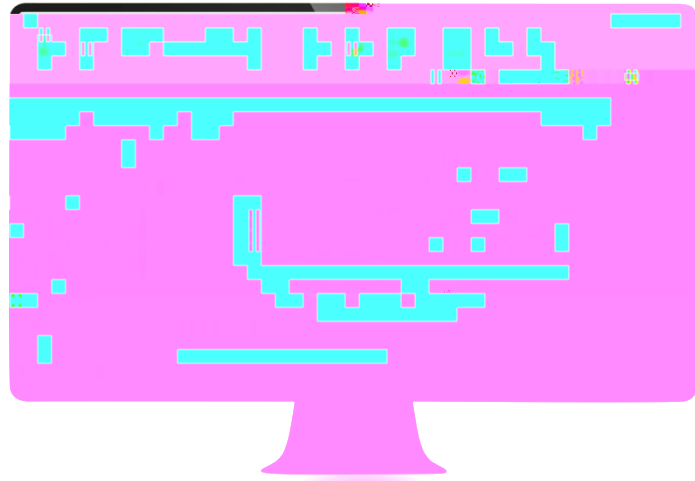
ECU

CCP XCP

ECU

- A2L
- DAO/Pol I i ng
-
- MAP
- MDF/MF 4
-
- par hex
-
-
-
-





Di agnosti cs over I nternet Protocol

DoI P

DoI P

DoI P

•

•

•

DoI P

●

●

TSMaster

●

DoI P

TE1051 TC1054 Pro TC1055

Pro

TC1055 Pro

4 CAN CAN 125Kbps-1Mbps CANFD

5Mbps 2 LIN 0-20Kbps 4 T1

100/1000Base 2 Tx 100Base-Tx/1000Base-T

TC1055 Pro USB3.0 PC

PC Windows

Linux

TSMaster DBC LDF XML ARXML

UDS ECU CCP/XCP

DoIP SOME/IP



	4 *100/1000Base-T1	2*100Base-Tx/1000Base-T	4 *CAN	2 *LI N
	4 *DI DO	3 *AI AO		
PC	1000Base-T/USB3. 0/			
CAN/LI N	DB9 Mâle			
I/O				

	DC	CAN ETH	9	12	28	V	
	DC	CAN ETH	--	0.98	--	A	
	DC	CAN ETH	--	11.8	--	W	
CAN		CANH CAHL	-58	--	58	V	
			--	120	--		
		1mA	2500	--	--	VDC	
LI N		LI N1 LI N2	-40	--	40	V	

✓ TC1055 Pro



✓ 12V2A

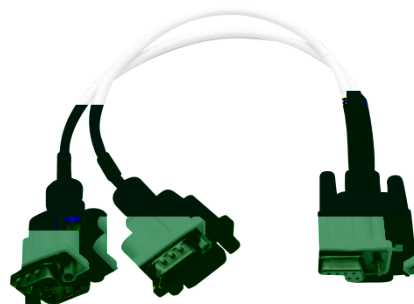


✓



✓ DB9

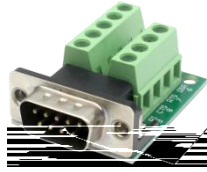
CAN



✓ DB9 LI N

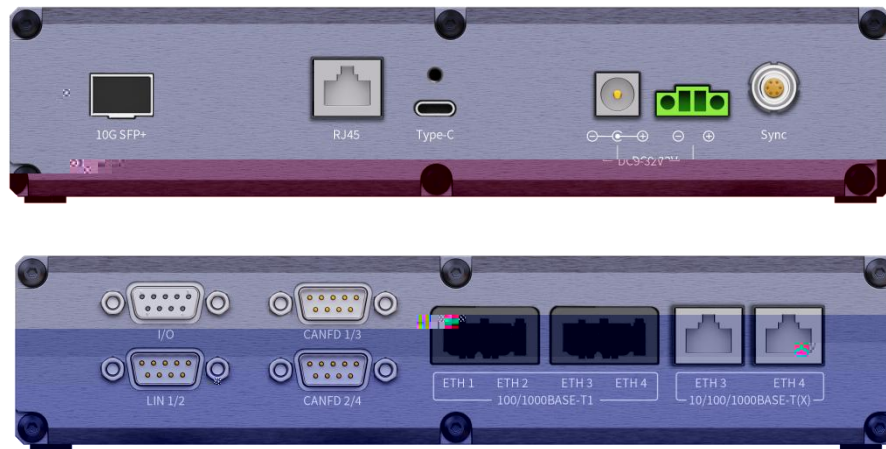


✓ DB9




✓ TE MATENET





- 10G SFP+
- 1000Base-T

- J
- 

➤ DB9 Mâle CAN

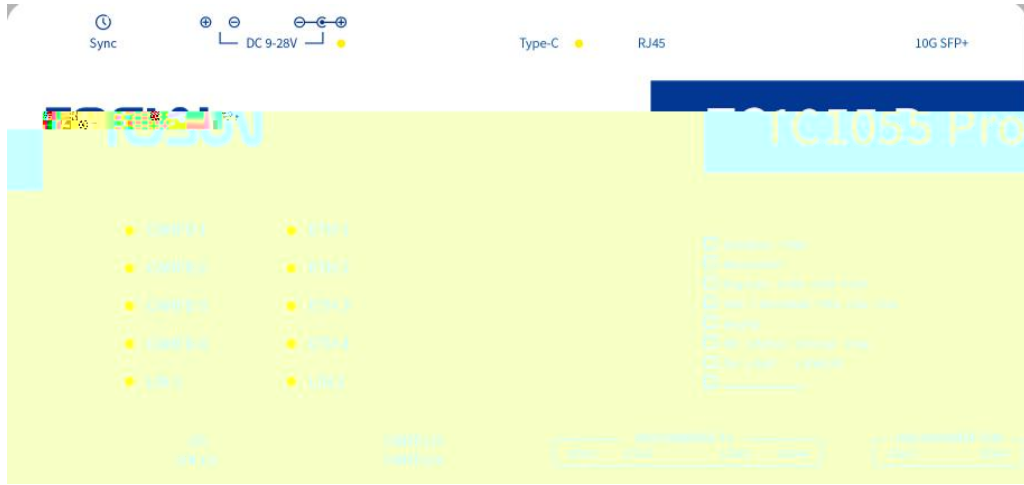
DB9						
	CANFD 1/3	PI N2	CAN1_Low	CANFD 2/4	PI N2	CAN2_Low
		PI N3	CAN_GND		PI N3	CAN_GND
		PI N4	CAN3_Low		PI N4	CAN4_Low
		PI N5	CAN_Shi el d		PI N5	CAN_Shi el d
		PI N7	CAN1_Hi gh		PI N7	CAN2_Hi gh
		PI N8	CAN3_Hi gh		PI N8	CAN4_Hi gh

➤ DB9 Mâle LIN

DB9			
	PI N2	GND	
	PI N3	GND	
	PI N6	LIN2	
	PI N8	LIN1	
	PI N9	V_Bat	

➤ TE MÂTENET

➤ RJ45



DC	
Type-C	USB
CANFD 1	CANFD 1
CANFD 2	CANFD 2
CANFD 3	CANFD 3
CANFD 4	CANFD 4
LIN 1	LIN 1
LIN 2	LIN 2
ETH 1	1
ETH 2	2
ETH 3	3
ETH 4	4

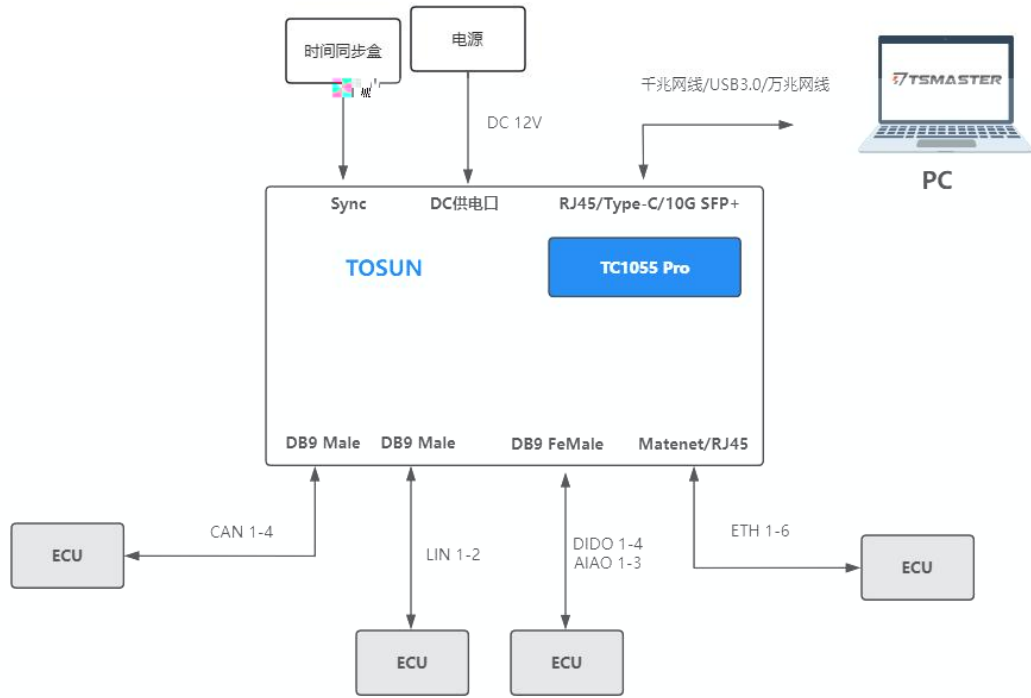
/

/	
DC	
Type- C	USB
CANFD	CANFD
CANFD	CANFD
LIN	LIN
LIN	LIN
ETH	
ETH	

1.

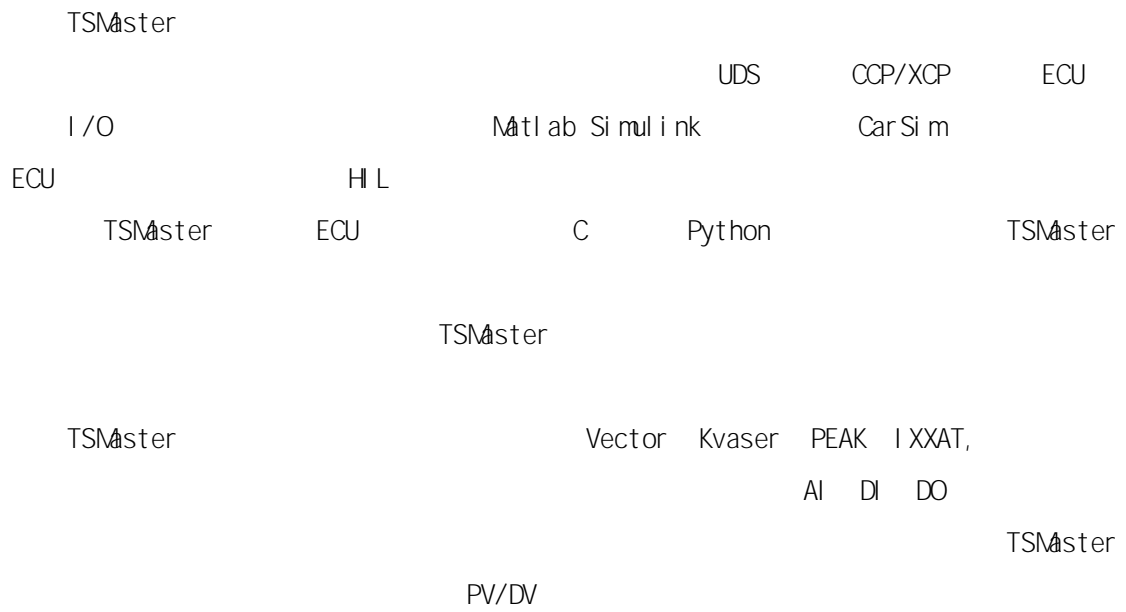
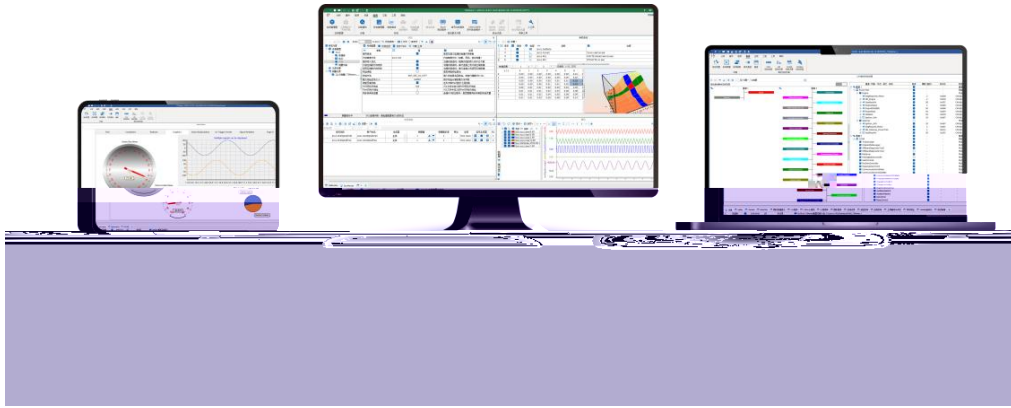
2.





TC1055 Pro			DC 12V		RJ 45
Type-C	PC		CANFD	LI N	DI DO AI AO
ECU	PC	TSMaster	TC1055 Pro	ECU	
10G SFP+			10G SFP+	TSMaster	TC1055
Pro	PC	wreshark	10G SFP+		TC1055 Pro

Windows



TSMaster

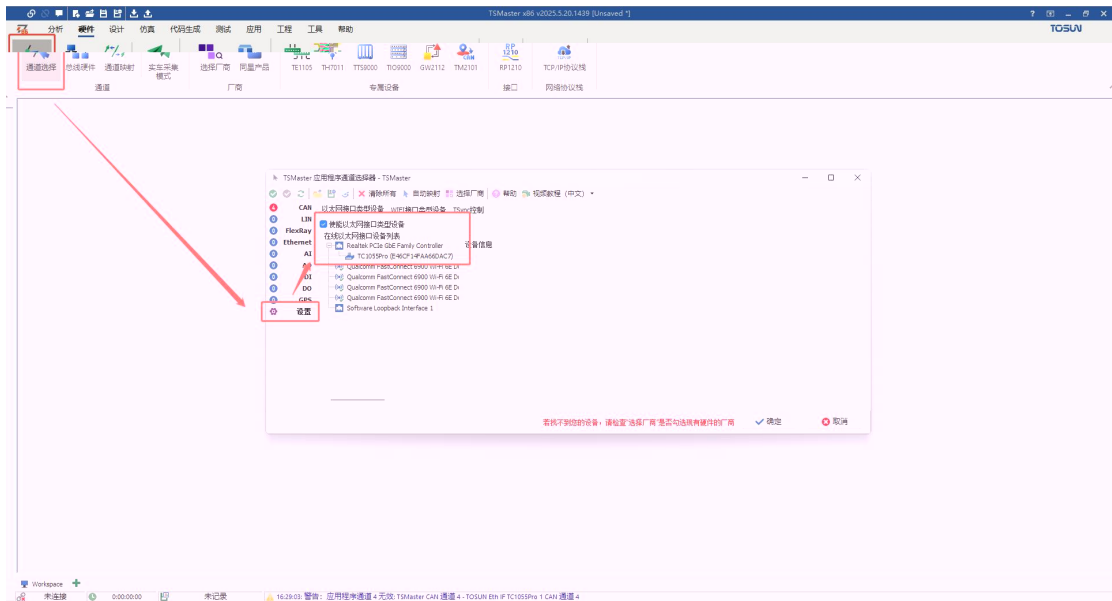
<https://www.tosunai.com/downloads/>

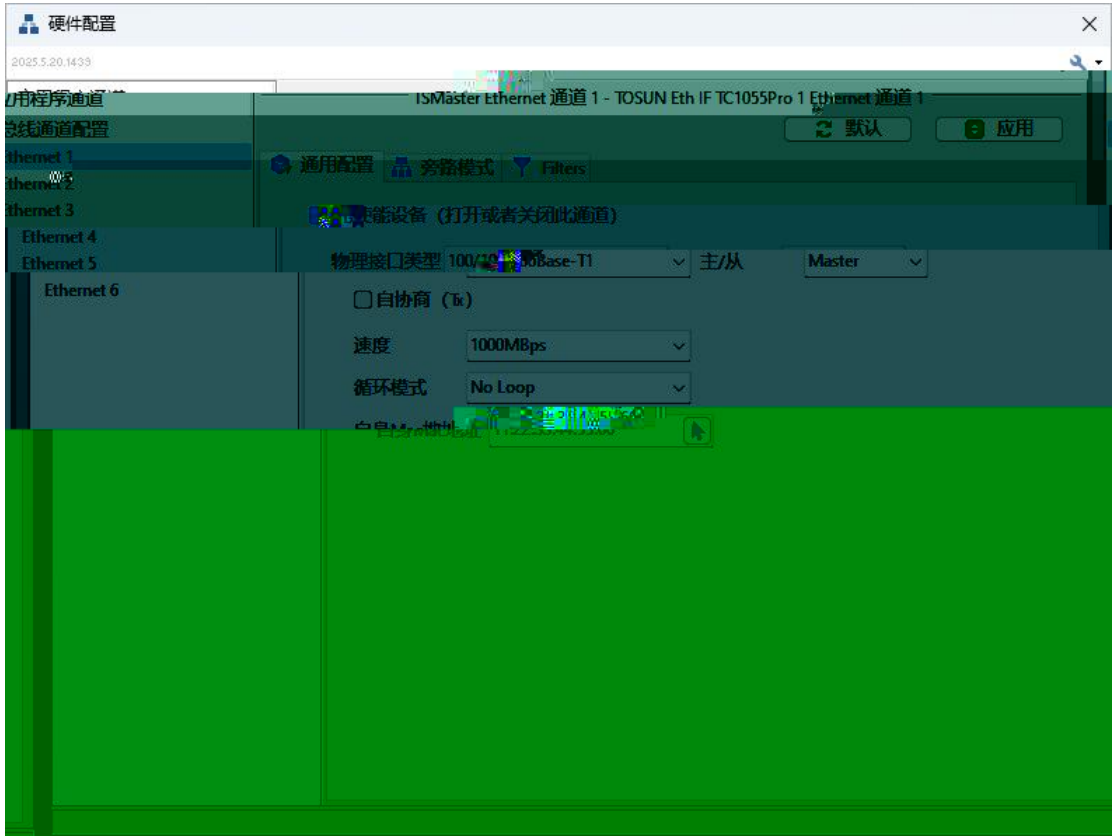
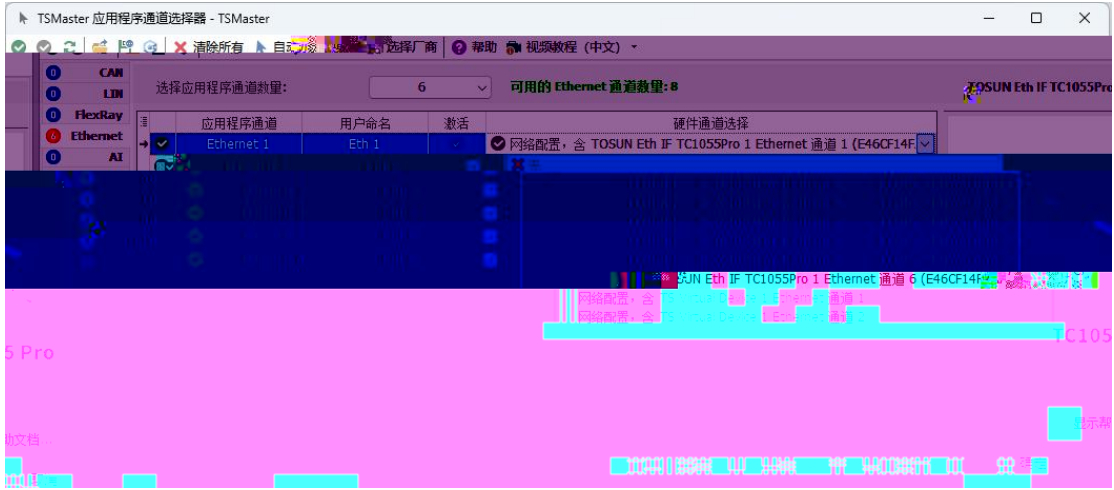


PC



PC IP 192.168.1.x TC1055 Pro
TSMaster -
TC1055 Pro





TSMaster

ECU

TSMaster

TSMaster

*

Ethernet Bypass Mode

/

/

IDS/IPS

VAF

TC1055 Pro

ETH1(T1)

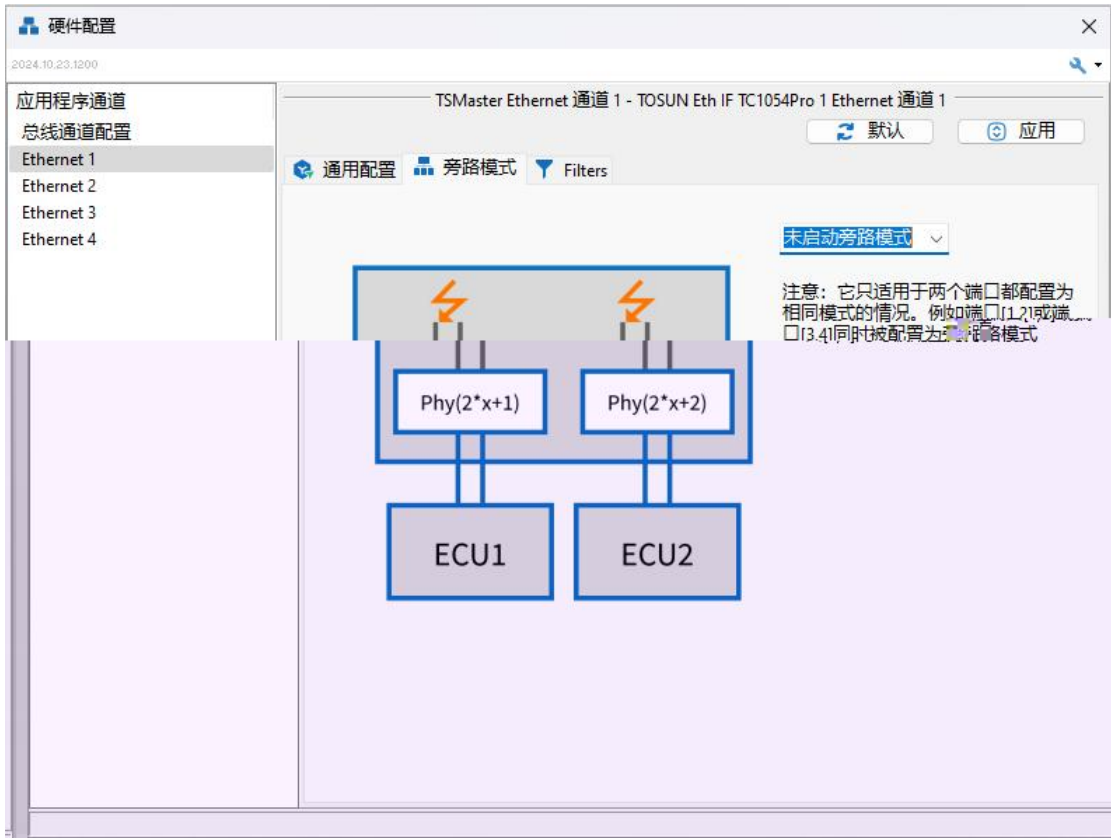
ETH2(T1)

ETH3(T1)

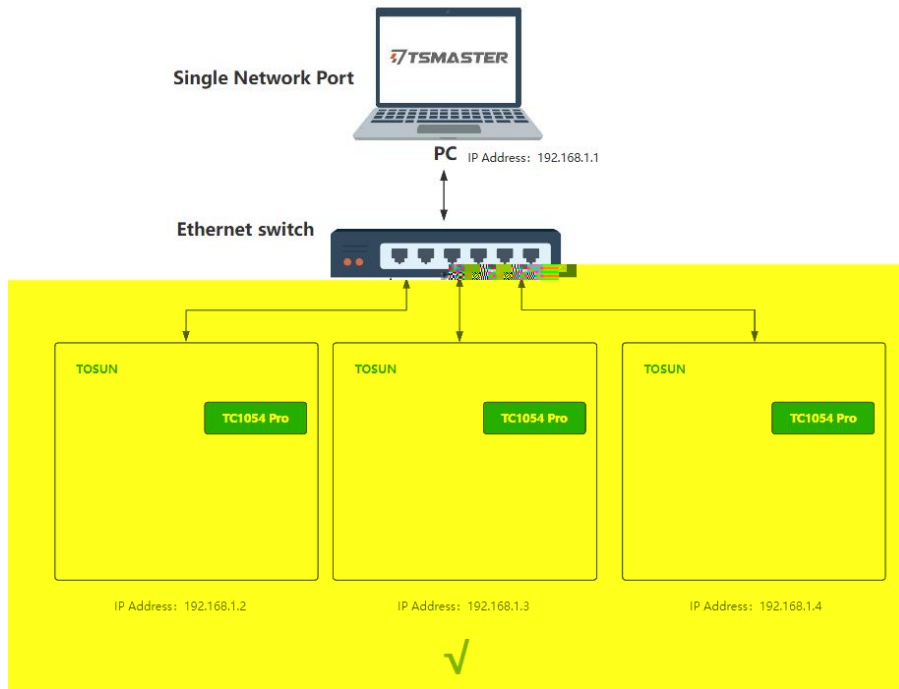
ETH5(TX)

ETH4(T1)

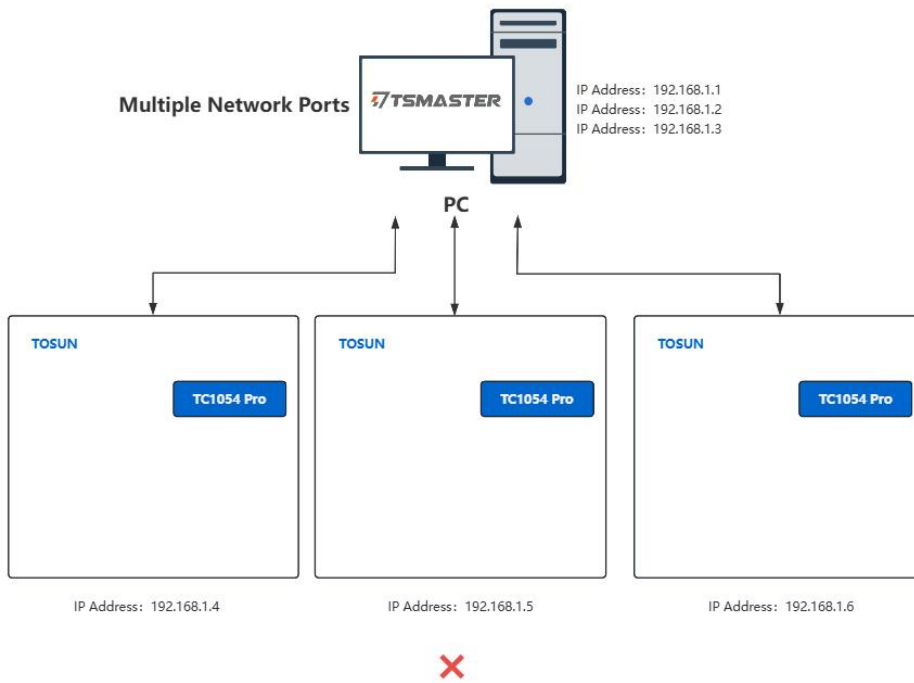
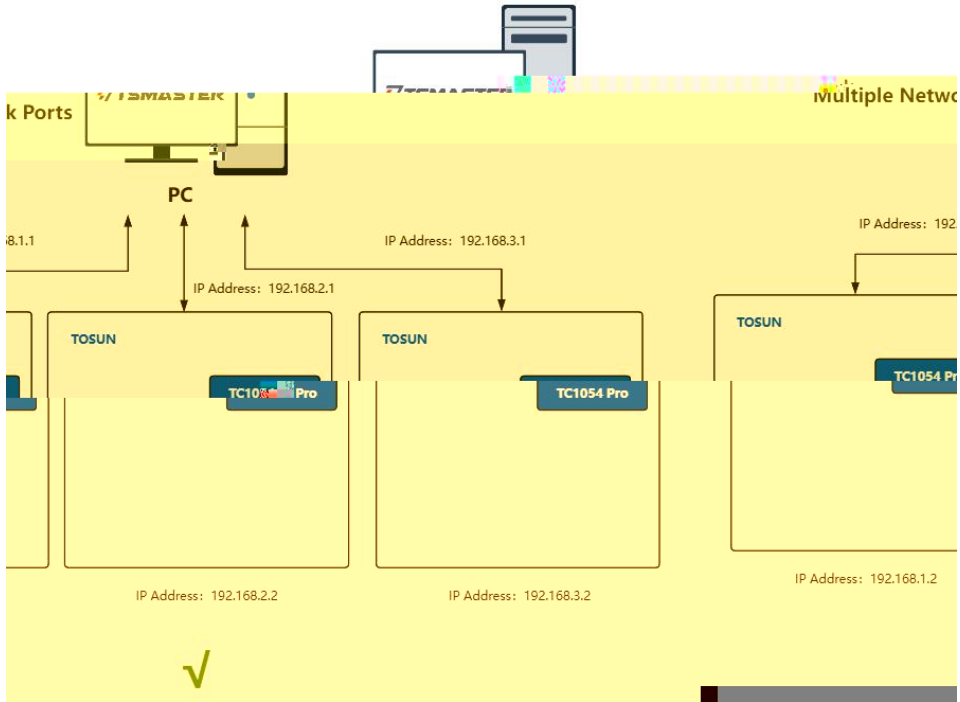
ETH6(TX)



TC1055 Pro
TC1055 Pro



TC1055 Pro



TC1055 Pro

6

		+12V DC	
	()	-40 ~+80	
	()	10%-90%	

1 TC1055 Pro

V1.0

2 TC1055 Pro

gi tee

<https://gi.tee.com/xujinpeng120/libTSDevBase>

软件 TFSMASTER

硬件

TCSP/PCIE/PCIe/USB/RS485/RS422/RS232

TFSMASTER

TCSP/PCIE/PCIe/USB

TCSP/PCIE

TCSP/PCIE/PCIe/USB/RS485/RS422/RS232

TCSP/PCIE/PCIe/USB/RS485/RS422/RS232

TCSP/PCIE/PCIe/USB/RS485/RS422/RS232

TCSP/PCIE/PCIe/USB/RS485/RS422/RS232

TCSP/PCIE/PCIe/USB/RS485/RS422/RS232

TCSP/PCIE/PCIe/USB/RS485/RS422/RS232

TCSP/PCIE/PCIe/USB/RS485/RS422/RS232

TCSP/PCIE/PCIe/USB/RS485/RS422/RS232

TCSP/PCIE/PCIe/USB/RS485/RS422/RS232

TCSP/PCIE/PCIe/USB/RS485/RS422/RS232

TCSP/PCIE/PCIe/USB/RS485/RS422/RS232

TCSP/PCIE/PCIe/USB/RS485/RS422/RS232

TCSP/PCIE/PCIe/USB/RS485/RS422/RS232

TCSP/PCIE/PCIe/USB/RS485/RS422/RS232

TCSP/PCIE/PCIe/USB/RS485/RS422/RS232

TCSP/PCIE/PCIe/USB/RS485/RS422/RS232

TCSP/PCIE/PCIe/USB/RS485/RS422/RS232

TCSP/PCIE/PCIe/USB/RS485/RS422/RS232

TCSP/PCIE/PCIe/USB/RS485/RS422/RS232

TCSP/PCIE/PCIe/USB/RS485/RS422/RS232

应用案例

TCSP/PCIE/PCIe/USB/RS485/RS422/RS232

TCSP/PCIE/PCIe/USB/RS485/RS422/RS232

